

RAINBOW COLLECTION

Colour and pattern are inextricably interwoven in this Sydney home, which has pushed its owners' boundaries in a beguiling way.

STORY *Chris Pearson* | PHOTOGRAPHY *Pablo Veiga*

KITCHEN Joinery by Kenwood Kitchens, finished in Dulux Terracotta Chip (wall side) and Dulux Whitsunday Island (full height). Cabinet pulls, Index & Co. Benchtops in Calacatta Viola marble from Granite & Marble Works (island) and stainless steel. Gesso Gloss wall tiles, Art of Tiles. Pitt Cooking cooktop, Winning Appliances. Brodware 'City Plus' tapware, Sydney Tap & Bathroomware. South Drawn Tile Linear pendant, Catapult Design. Articolo Lighting 'Domi' wall lights, Est Lighting. Blind in Osborne & Little 'Deya' fabric, Domus Textiles. Ercol bar stools, Temperature Design. Still-lifes by Joanna Gambotto (left); abstract painting by Karen Bloomfield.

The owners of this home in Sydney's inner west, Aimee Williamson and Julian Cornelius, live in a kaleidoscope of colour.

And perhaps it was meant to be. When interior designer Brett Mickan visited the couple in their previous home to discuss this project, he saw a prized artwork from Vietnam with all the hues "this house gave me" – terracottas, teals and lilacs – in their technicolour glory. Rainbow hues, radiating from every room, take their inspiration from both the original house and that artwork, which now hangs in the new home's dining area. "I've popped those colours, and tones that relate to those colours, around the home, balanced by a lot of white," he says.

Aimee adds that she and Julian would not have chosen those colours themselves: "We trusted Brett's judgement and thank goodness we did." When the couple bought the home in 2019, they were lured by its Federation roots and its large block of land.

"We loved the character, the bones were good and there was so much potential to transform it into a beautiful home for our family," says Julian. Especially with its huge backyard as a playground for Joel, now 12, and Isobel, now nine. But the house was dragged down by bland, all-white interiors that belied its colourful past – both actual and metaphorical.

"Unfortunately, there had been so many add-ons since the house was built that the beautiful original detailing was quite



THIS IS THE LIFE

"One of the things we love most are the distinct zones – there's enough private space for everyone," says Aimee. And when they all come together as a family and with friends, the living room offers plenty of space to accommodate a large gathering comfortably. Aimee says her friends always comment on – and are inspired by – how beautiful the home is.



FAMILY ROOM Hambourg lampshade, Kerrie Brown. Noomi String lounge chairs, Cult Design. Keely sofa, Fanuli. Ontario rug, The Rug Establishment. Fred coffee table, Jardan. Puku ottoman, Coco Flip. Aquarel tiles (on hearth), Art of Tiles. Custom side table, Bespoke Creations. Double Gourd table lamp, Bragg & Co. Artwork by Joshua Butler. Ceiling painted Dulux Cool. **HALL** The goanna runner was custom-made for this house by Tappeti. Nebulae pendant light, Stylecraft. Walls painted Dulux Whitsunday Island (top) and Dulux Soft Fresco.

hidden,” says Brett. “It was dark and poky, with a winding floor plan and a kitchen that was disconnected from the backyard.”

The couple asked Colin Filmer of Filmer Architects to remodel the back, while honouring the home’s origins. In a similar vein, they hired Brett to zap up the interiors.

Colin created inviting sightlines from the front door through to a new open-plan area with covered verandah at the back, while respecting the heritage architecture of the formal living, three bedrooms and study at the front. The airy open plan adopts the scale of the original section, combined with detailed skirtings and joinery so it feels as if it belongs.

Looking forward as well as back, Brett paid homage to the past, but not slavishly so. “We used original drawings to reintroduce architectural features, such as the Arts and Crafts detailing and materiality, and treated them in a contemporary way,” says Brett. “The further we move through the house, the lighter the detail becomes - it has a natural flow to it.” The colour journey begins in the hallway with its two-tone walls: a visual dado rail separates crisp white and seafoam blue - a nod to the past but

presented in a fresh way. Meanwhile, a custom runner featuring a goanna references the terracotta of the brick facade, which is also echoed in the kitchen and powder room joinery. Equally strikingly, the blue ceiling in the family room highlights the stunning original plasterwork while creating intimacy, despite the height.

For unity, Brett explored recurring themes. “One bathroom is in yellows and peach, the other is in greens, but they share Shaker cabinetry and geometric floor tiles. While the palettes are different, they speak the same story,” he explains. There is harmony in diversity too: the pinks and blue-greens picked out from the leadlight windows and reds from the brick have been applied in different intensities.

“I avoided repeating the same tonal values, with rich and paler takes throughout, to add surprises and make the home natural and organic,” says Brett. Patterns create continuity. There are botanicals in artworks, cushions and curtains, linking the interior to the beautiful garden beyond, as well as geometrics, layered in a way that delivers ▶

HALL Custom runner, Tappeti. Bathroom door and lower wall painted Dulux Soft Fresco. Aquarel floor tiles, Art of Tiles (in bathroom). **DINING** *Opposite top* Stamp dining table, Grazia & Co. Vintage dining chairs, Collectika. Lambert & Fils ‘Parc 04’ pendant, Living Edge. Petrine wall lights, Nightworks Studio. Curtains in Gaston y Daniela ‘Lineo 92’ fabric from Domestic Textile Corporation. Valley sofa, Jardan. Note side table, Blu Dot. Bookends and horse sculpture, Orient House. Small painting by Joshua Butler, large painting by Ketna Patel. **LIVING** *Opposite bottom* Hay ‘About A Lounge AAL81’ lounge chairs, Cult Design. Altura floor lamp, Fanuli. Sequence 01 side table, Coco Flip. Verona ottoman in Élitis ‘Hotel Particulier’ fabric, Kerry & Co. Custom rug, Tappeti.



THE PALETTE

Dulux Soft Fresco (hall)

Dulux Terracotta Chip
(kitchen joinery)

Dulux Deep Arctic (front door)

MAIN BEDROOM Ian Mankin 'Epsom Stripe' wallpaper, Domestic Textile Corporation. Custom headboard by H&J Furniture. Custom bedcover and curtains by Coco's Soft Furnishings. Bedlinen, L&M Home. Arteriors 'Aslan' table lamp, Boyd Blue. Express bedside table and custom chest of drawers, Planet. Vintage figurines, Lunatiques. Marble mantel, Granite & Marble Works. Aquarel tiles (on fireplace), Art of Tiles. Wilton Villa Naturalis carpet, International Floorcoverings. Window seat by Bespoke Creations. ▶

Paint colours are reproduced as accurately as priming processes allow.

“Every room takes inspiration from the home’s original colours and the owners’ artwork.” BRETT MICKAN, INTERIOR DESIGNER

energy, contrast and movement. Texture, too, forms an important part of the narrative. The kitchen, for example, features ceramic tiles on the rangehood and Shaker-style panelling contrasted with slick of Calacatta Viola marble. “We didn’t want flat walls and these details feel more period. I love that Aimee and Julian were brave with colour and and pattern,” says Brett.

“We adore the whole house, especially the colours,” says Aimee. “We would never have had the creativity or courage to imagine this palette, but it works incredibly well.” Adds Julian: “We trusted in Brett’s vision and he absolutely delivered.” ▶

Brett Mickan Interior Design,
Surry Hills, NSW; bmid.com.au.
Filmer Architects, Haberfield, NSW;
(02) 9798 4222.



JOEL'S ROOM *This page* Headboard by H&J Furniture. Industrial wall light, Onefortythree. Stash desk, Blu Dot. Kabi chair, Stylecraft. Blinds in Diane Bergeron 'Hudson' fabric, Coco's Soft Furnishings. Hendrix X pendant light, About Space. **STUDY** *Opposite top* Cole & Son 'Marly' wallcovering in Bleu, Boyac. Custom desk, Bespoke Creations. Arper Catifa desk chair, Stylecraft. Nemo Untitled Linear table lamp, Mondo Luce. Artworks by Ali McNabney-Stevens. **POWDER ROOM** *Opposite bottom right* Custom headboard by H&J Furniture. Feature cushion in Christopher Farr 'Pollen' fabric, Ascraft. Sugarbag Dreaming wallpaper, Willie Weston. Li'l Something bedside table, Blu Dot. Vintage table lamp, Lunatiques. Bedlinen, In the Sac.



HOUSES H&G

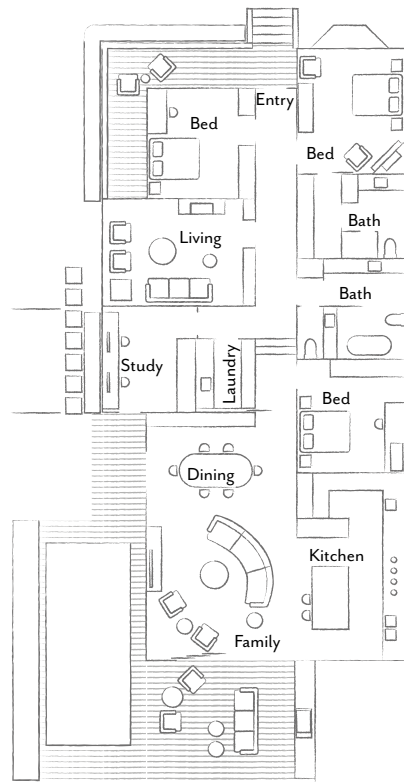




BARBECUE AREA Garone tiles, Eco Outdoor. Artusi barbecue, Winning Appliances. Roger Pradier 'Belcour Model No.1' wall lights, Special Lights. Breeze sofa and armchairs, Harbour 1976. Bob outdoor tables, Reddie. **STREET ENTRANCE** Roger Pradier 'Hogar No.1' wall lights, Special Lights. Verandah tiles, Old English Tiles. Front door painted Dulux Deep Arctic.



THE LAYOUT



1

THE SOURCE

The colours in a treasured artwork can provide the perfect starting point for a whole-home palette.

2



3



5



4



6



8



9



10



11



Produced by Shayne Burton.

1 *Wetland (Dusk)* artwork by Cosima Scales, \$700, Otomys. 2 Everest MD-816 bamboo silk-wool rug in Gold (270x180cm), \$7360, Hali. 3 Cassia daybed, from \$2004, King. 4 Green ceramic pineapple, POA, Xavier Furniture. 5 Smeg "50s Retro Style" long slot 4-slice toaster in Pastel Green, \$249, Harvey Norman. 6 LEDlux 'Stem' table lamp, \$79.95, Beacon Lighting. 7 Trudon 'Abd El Kader' candle, \$139, Myer. 8 B&B Italia 'Metropolitan' swivel armchair, \$7555, Space. 9 Fruity roller blind fabric in Zest, POA, Wynstan. 10 Artie 'Wave' side table, \$1110, GlobeWest. 11 Archie cushion, \$59.95, Freedom. For Where to Buy, see page 190. **H&G**