

# DRAMA CLASS



Colour, texture and scene-stealing wallpapers are the making of this beautifully renovated 1920s family home in Sydney.

STORY *Georgia Madden* | PHOTOGRAPHY *Pablo Veiga*

HOUSES **H&G**

## THIS IS THE LIFE

When a home has such an incredible view, it's all too easy to forget the interiors, says interior designer Brett Mickan. Here, colour, texture and artworks help create spaces that are interesting in their own right, preventing the view from dominating. "Each room reveals special moments," says Brett. "It's lovely to see how the spaces spill out so naturally to the outdoors, but it can also be closed up for a cosy, cocooning home when the weather is dreary."



**KITCHEN** Iksel wallpaper, Boyac. Island topped with Caesarstone White Attica. Oven, Miele. Wine fridge, Vintec. &Tradition 'The Pavilion' stools, Cult. Articolo Lighting 'Moni' pendant, Est Lighting. Bolon 'BKB Sisal' vinyl flooring, The Andrews Group.  
**LIVING** The artwork is a photograph homeowner Clive took while travelling. The decorative plates are family heirlooms. White side table, Fred International. Black side table, Boyd Blue. Lamp, Bragg & Co. Blue pot, Jardan. Yellow pot, Blu Dot.



*“THE FABRICS ARE A KEY PART OF THE DESIGN SO WE KEPT THE SURROUNDING COLOURS VERY SIMPLE.”* Brett Mickan, interior designer



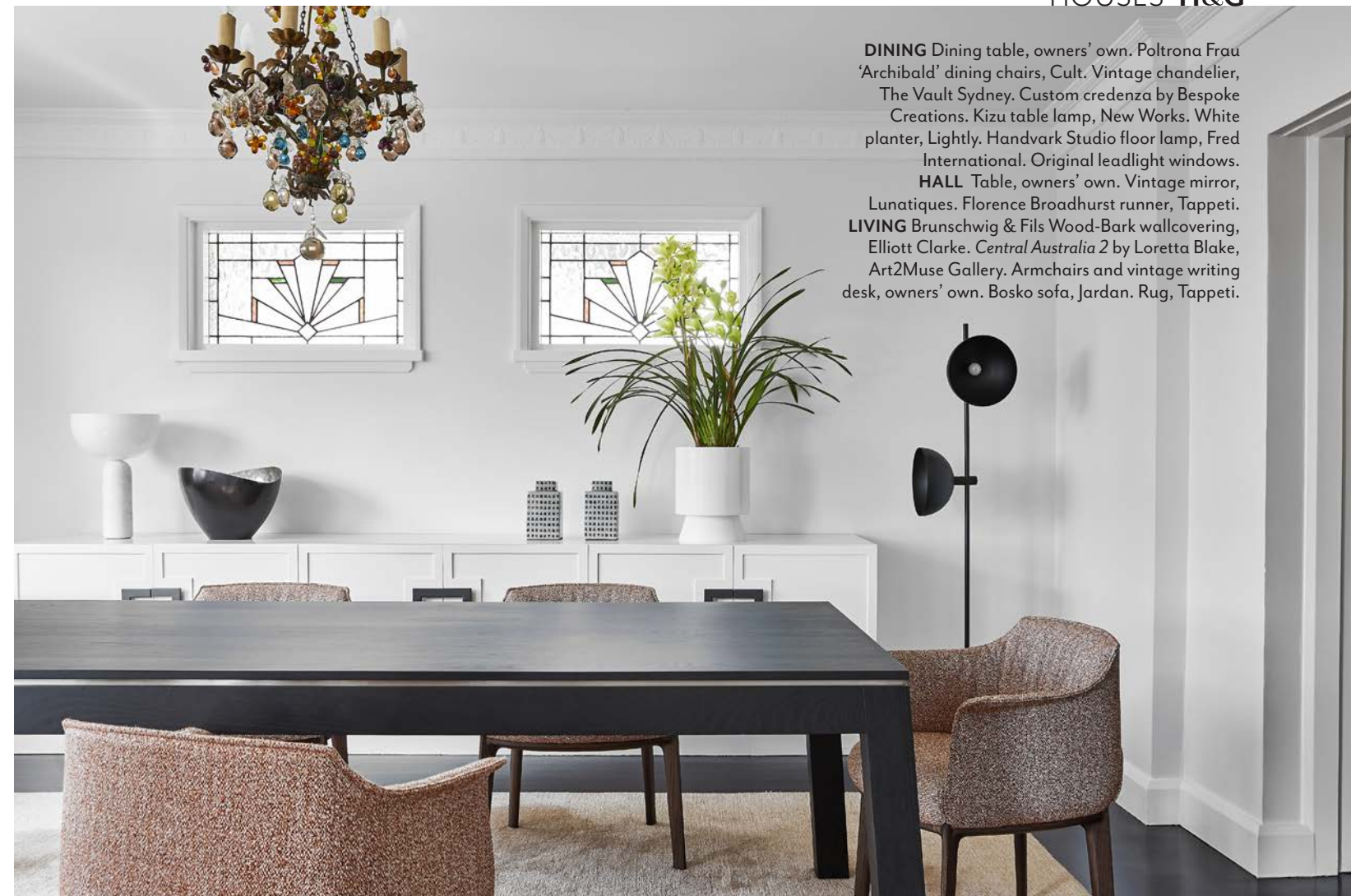
**THE PALETTE**

Dulux  
Lexicon Half  
(ground floor,  
throughout)

Dulux  
Basic Coral  
(Holly's room,  
top)

Dulux Stone  
(Holly's room,  
bottom)

Paint colours are reproduced as accurately as printing processes allow.



**DINING** Dining table, owners' own. Poltrona Frau 'Archibald' dining chairs, Cult. Vintage chandelier, The Vault Sydney. Custom credenza by Bespoke Creations. Kizu table lamp, New Works. White planter, Lightly. Handvark Studio floor lamp, Fred International. Original leadlight windows.  
**HALL** Table, owners' own. Vintage mirror, Lunatiques. Florence Broadhurst runner, Tappeti.  
**LIVING** Brunswick & Fils Wood-Bark wallcovering, Elliott Clarke. *Central Australia 2* by Loretta Blake, Art2Muse Gallery. Armchairs and vintage writing desk, owners' own. Bosko sofa, Jordan. Rug, Tappeti.

It's the stuff of renovation nightmares... Homeowners Clive and Sarah spent a year renovating and extending their 1920s brick home on Sydney's Lower North Shore only to find that the reality fell short of their vision. Unsure how to fix it, the couple, who live here with their children Holly, 13, and Alex, 12, turned to interior designer Brett Mickan for help. "They couldn't pinpoint why, but it just didn't feel right," says Brett. "The whole scheme was very flat and austere, with lots of grey and hard edges. They're a young, active family and it didn't reflect their personalities."

The layout of the five-bedroom home was to remain the same, so Brett focused on colour, texture and pattern to introduce the warmth and character the family desired. "I come from a theatre-design background and I had to use all my theatre tricks to make the spaces work," he says.

Brett began by removing a lot of the fussiness, such as heavy light fixtures, then whitewashed the walls and ceilings to make the rooms feel lighter and more spacious. Next came a medley of beautiful upholstery fabrics. "The family is originally from the UK so I wanted to incorporate a little bit of that traditional English feel into the design through the fabrics, but with an Australian twist," says Brett. ►







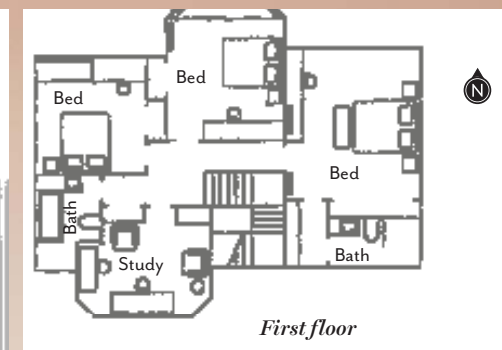
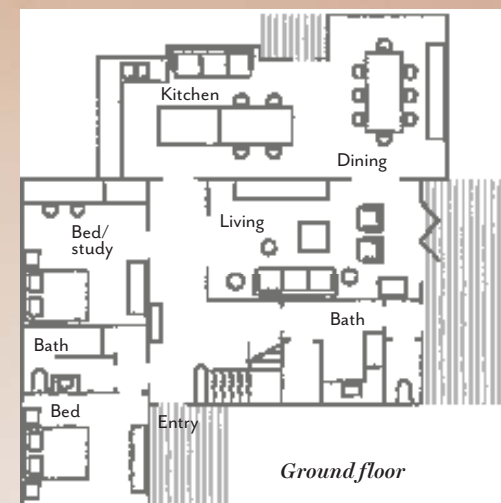
**ALEX'S ROOM** *Left* Magnetic Curves Map wallpaper mural, Murals Wallpaper. Custom bedhead by Jade Upholstery in Peggy Platner 'Georgia' fabric, Motivo.

**STAIRWELL** Florence Broadhurst 'Japanese Floral' wallpaper, Materialised. Articolo Lighting 'Fizi Trilogy' pendant, Est Lighting.

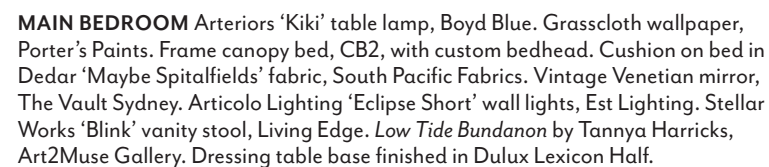
**HOLLY'S ROOM** *This page bottom left and opposite* Headboard in Anna Spiro Textiles 'Kandilli' fabric. Wall light, One Forty Three. The Lap nightstand, Blu Dot. *B and K at the Eden Roc* by David Parise. Blinds in Osmond Kantilla Pandanus Paperbark fabric from Willie Weston. Window seat in Houles Ilaya from Unique Fabrics. Cushions in Colleen Ngwarraye Morton 'Singing Bush Medicine' fabric from Willie Weston (on bed), Anna Spiro Textiles 'Camona' fabric and Christopher Farr Cloth 'Pollen' fabric from Ascraft (on window seat). ▶

## THE LAYOUT

HOUSES **H&G**







## THE SOURCE

*Shine a spotlight on theatrical elements with a supporting cast of cool-toned, textural characters.*