

EXTERIOR / The distinctive architectural details provided a wealth of inspiration for the interiors. Landscape design by Hugh Burnett Landscape Architect. **DETAIL** / Dome, Amanda Dziedzic Glass. Candle, Saison. Flowers, Poho Flowers. Coffee table, Zuster. **FOR WHERE TO BUY, SEE PAGE 203.**



FEATURE PLANTS

Cardamom ginger
(*Alpinia calcarata*)
Gardenia
Buxus hedge and
topiary balls
Crepe myrtle
(*Lagerstroemia*)



Clean sweep

Colour and contemporary updates were key to transforming a ‘frilly’ Federation villa into a clean-lined Sydney heritage home.

STORY CHRIS PEARSON / STYLING ASHLEY PRATT / PHOTOGRAPHY JOHN PAUL URIZAR

This is the life

The bright open-plan area is the centre of family activities. "The dining table is used for homework as well as dinner parties," says Roslyn. "And it's a wonderful space from which to enjoy the garden, whatever the weather." Thanks to the glass sliding doors, the girls are easily supervised when playing in the garden or swimming in the pool. Once they have gone to bed, Roslyn and Michael move to their cosy retreat to watch TV or just relax.



Every day, Roslyn, the owner of this home in Sydney's inner west, tells her husband Michael how much she loves it. Light, airy and bursting with colour... what's not to love?

But the relationship had a shaky beginning. The red-brick Federation villa was packed with Art-Nouveau detailing, including stained-glass windows, frieze rails on the facade and a turret-shaped summer house abutting the verandah when the couple first spotted it for sale. "It was all a bit over the top and overwhelming," says Roslyn. Beyond the embellishments, however, she appreciated its potential as a home for herself, Michael, and their two tween daughters.

After purchasing, the couple enlisted heritage architect Colin Filmer to 'simplify' the house. Colin shaved off a tangle of lean-tos that impeded the natural light and the internal flow, then added a large glass-walled open-plan kitchen/dining/living area. Next, he went into the roof to create a playroom and guestroom, then repurposed some of the original rooms. Today, the layout better suits the family's lifestyle: main bedroom, ensuite and a parents' retreat at the front of the house; the girls' rooms and a bathroom along the hall; light and lovely open-plan area at the rear.

For the interiors, Roslyn and Michael engaged Brett Mickan of Brett Mickan Interior Design. "We wanted to make the frilliest house in the street lighter, more contemporary and more functional," says Brett. Seeking to create a seamless flow from one end of the house to the

'We wanted to make the frilliest house in the street lighter, more contemporary and more functional.'

Brett Mickan, interior designer

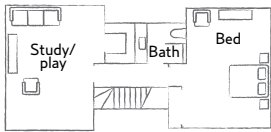
LIVING / above left and right Roslyn and her daughter in the new living area, where a custom-made rug picks up on the colours in the garden. Sofa, Space. Wing chair (blue), Ke-zu. Occasional table, Temperature Design. Coffee table, Zuster. Jetmaster fireplace. Roman blinds by Coco's Soft Furnishings, in Limitless fabric from Elliott Clarke. Artwork by Dana Dion. **Designer buy:** Winston low-back chairs (orange), from \$2580/each, Jardan.

PARENTS' RETREAT / opposite Clean-lined contemporary furnishings balance the 'frilliness' of the period features. Coffee table, armchair and sofa, all Hub Furniture Lighting Living. Vintage pendant light. Rug, Korda Design. Wall sconces, Satelight Design. Joinery, EKD. Sultan stool, Space. Artworks by Vanessa Stockard (on shelf) and Catherine Cassidy (over fireplace). **FOR WHERE TO BUY, SEE PAGE 203.**

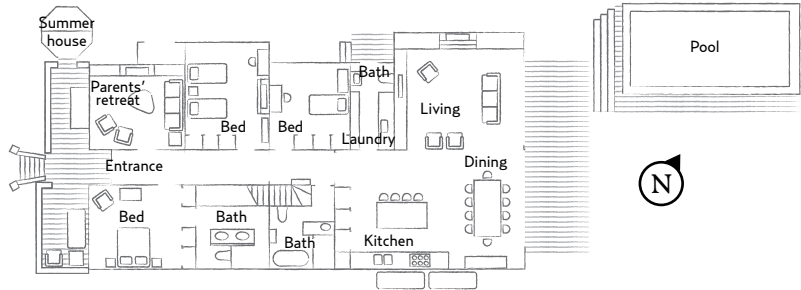


THE LAYOUT

FIRST FLOOR



GROUND FLOOR



'I wanted the contemporary pieces to sit quietly and comfortably with the rest of the house.'

Brett Mickan, interior designer

KITCHEN / above, left and right Modern, spacious, oodles of storage... the revamped kitchen has everything a family could want. Stools, Great Dane. Pendant lights, Mondo Luce. Joinery by Kenwood Kitchens. Island benchtop, Arabescato marble from Granite & Marble Works. Rear bench, Caesarstone in Snow. Cabinetry painted Dulux Ticking. Artwork by Tannya Harricks.

DINING / Brass, seen here in the pendant light, is a recurring material. Buffet and dining chairs, Zuster. Dining table, MCM House. Custom-made rug. Artwork by Kudditji Kngwarreye.

Designer buy: Pisces Constellation pendant light, \$2800, Anaesthetic. **FOR WHERE TO BUY, SEE PAGE 203.**

Paint colours are reproduced as accurately as printing processes allow.

THE PALETTE

Dulux Ghosting Half
kitchen/dining/living

Dulux Lyttelton
main bedroom

Dulux Mauve Pansy Quarter
girl's bedroom



Happy hues

Brett has skilfully used colour to both play up and play down the original features in this Federation home. Cornicing, ceiling mouldings and architraves are all in crisp white, which lets the ornate detailing speak for itself. The furnishings, in plums, oranges, blues and greens taken from the heritage tiles and stained glass, work in harmony with the grey-based neutrals on the walls and the warmth of the blackbutt flooring that is used throughout.

MAIN BEDROOM / Textural soft furnishings (all custom made) boost the luxe factor. Bed, Fanuli. Bedside table, Zuster. Wall light, Cult. Artwork by Tannya Harricks.

HALLWAY / Simply decorated with a trio of pendant lights from Catapult Design and a runner from Armadillo&Co, the hallway feels spacious and inviting. Coat stand, Jordan.

MAIN ENSUITE / The ensuite is an elegant mix of marble, mosaics and brass. Subway and mosaic tiles, Surface Gallery. Floor tiles, Onsite Supply+Design. Custom vanity with Arabescato marble top. Lee Broom Crystal Bulb suspension lights, Cafe Culture+Insitu. Custom mirror.

GIRL'S ROOM / Pinks, peach and purples make a palette fit for a princess. Desk, Aero Design. Chair, Cult. Custom beanbag in Harlequin fabric, from Domestic Textile Corporation. Curtains by Coco's Soft Furnishings.

Designer buy: Lindholdt Studio Petite Machine table lamp, from \$990, Fred International. **FOR WHERE TO BUY, SEE PAGE 203.**



◀ other, he replicated architectural details such as the ornate moulded ceilings and cornicing in the old section, in the new addition. For consistency, he specified wide-gauge blackbutt floors throughout.

When it came to colour, Brett created a balance between vibrant colours and neutrals, drawing inspiration from the original stained-glass windows and the tessellated tiles on the front path. The two living areas feature bursts of colour in the furnishings; in contrast, the girls' rooms are in muted mint and mauve.

A play on pattern adds another decorative layer. Subway tiles on the walls in the two bathrooms contrast with hexagonal wall mosaics and large-format hexagons on the floors, while both form a counterpoint to the textured ceiling mouldings. The main bedroom's ensuite, newly created in what was a bedroom, is the home's best-kept secret. Hidden behind a wall of joinery in the main bedroom, the door opens to reveal what Brett refers to as a "Federation spa".

All the door hardware is new, but some is contemporary and some traditional, the two woven together by the shared material, brass. Like a metaphor for the house, it unites the rooms without being slavish to the original details. "Now the house is clean and neutral," says Brett. "It flows."

H&G

Filmer Architects, Haberfield, NSW; (02) 9798 4222 or www.filmerarchitects.com.au. Brett Mickan Interior Design, Enmore, NSW; (02) 9550 2706 or bmid.com.au.