

AUSTRALIAN

# HOUSE & GARDEN

Colour & design special

HOW TO SHOP FOR PAINT

Love your living room  
Super sofas, fabrics & layouts

NIFTY GADGETS UNDER \$150

EDITOR'S CHOICE

40+ fab finds from Milan Furniture Fair

The pure genius of DESIGNERS GUILD

# mad about hue

Six homes to boost your colour confidence

913 1300610007091  
JULY 2012 \*\$7.50 +NZ\$8.40 (incl. GST)  
07  
acp  
magazines





# BEST OF TIMES

Wearing its latest renovation with pride, this Federation charmer in Sydney's inner west bridges a century of design history in a state of perfect harmony.

STORY CHRIS PEARSON | STYLING KATE NIXON | PHOTOGRAPHY MAREE HOMER





**EXTERIOR** Four-year-old Chloe at the front gate. Tessellated tiles, leadlight windows and a deep verandah are just a few of the home's abundant Federation charms.

**LIVING DETAIL** The tonal palette of the tiled garden path is subtly repeated within. Chair from Stylecraft. Photograph by BMID (far left). Zebra print from Ikea. Cushion in John Robshaw Textiles Mathura Kashmir fabric from Ascraft. **Smart buy: Olunda framed alphabet poster, \$69, Ikea.** For Where to Buy, see page 220.





**KITCHEN** Sarah shares a moment with her twins, Emma (left) and Chloe. Joinery by Kenwood Kitchens. Quantum Quartz benchtop in Luna Grey from WK Marble & Granite. Stove from Blanco. Rangehood from Qasair. Stools from Hub Furniture Lighting Living.

**Smart buy:** Leran rattan pendant lights, from \$69/each, Ikea.

**INFORMAL LIVING DETAIL** Box Furniture armchairs are covered in Montpellier fabric from Elliott Clark. Throw from No Chintz.

**INFORMAL DINING** "The wedge-shaped dining table fits this space incredibly well," says Sarah. B&B Italia Seven table from Space. Bookcase made by Intercraft Furniture. Lee Reynolds artwork for Vanguard Studios from a gallery in Miami, Florida.

**Designer buy:** Catifa 53 leather and timber chairs, \$1051/each, Stylecraft. For Where to Buy, see page 220.

**I**f you want proof of the power of colour, look no further than this Federation bungalow in Sydney's inner west, where the collaboration between a confident interior designer and trusting clients has totally modernised the grand old home.

Owners Sarah and Craig Galvin and their family had outgrown a cottage in a nearby suburb when they upsized to this house in 2007. While they loved its high ceilings, generous rooms and authentic details, they weren't keen on the layout or the faux-Victorian flourishes that had been added in the '80s, at the same time as an addition at the back. They also needed more bedrooms.

They called on architect Colin Filmer of Filmer Architects and interior designer Brett Mickan of BMID to rework the floor plan, blend three eras – Federation at the front, a '30s addition incorporating the formal living room, and an airy, contemporary addition at the rear – and erase the intrusive Victoriana.

They demolished the rear, built a new addition within the original footprint and reclaimed attic space to create two new bedrooms. One existing bedroom was converted into an ensuite and dressing room, and a bathroom at the end of the hallway removed to create one long entry.

Throughout, Brett has used texture, colour and detail to blend the eras, creating a harmonious home for the Galvins, with ample space for children Oscar, six, twins Emma and Chloe, four, and 18-month-old Matthew. >





## This is the life

This versatile home adapts to both daily family life and lavish entertaining. "We've had parties for 70 here," Sarah says, "and opened up the lot, with adults sitting on the steps and children on the grass." This scale of entertaining calls for a large, well-equipped kitchen with a walk-in pantry. "With such a big immediate family – 22 people, including siblings and their children – we included two dishwashers, double fridges and a butler's pantry to hide the mess."



'Green grounds the open-plan zone and connects to the lawn outside.' BRETT MICKAN, INTERIOR DESIGNER



'We needed a sofa that would stand up to four children under the age of seven.' SARAH





## Colour codes

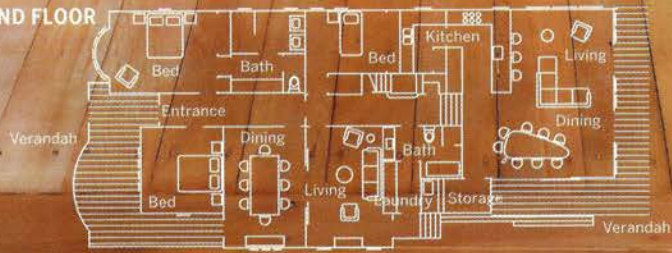
A rich olive shade in the open-plan living area and deep red in the butler's pantry draw their inspiration from heritage colours, but with a telling twist. "It's a modern interpretation of Federation green," says interior designer Brett Mickan. "A grey base makes it look more modern." It's a combination that mimics the tessellated tiles on the front path – a theme repeated throughout the house in different shades and intensities.

**LIVING** "The sofa is so sculptural. It's like an island in the room," says Sarah. Bend sofa and Twigg floor lamp from Space. **Smart buy:** Offset Bop side table, \$280, Aero Designs. For Where to Buy, see page 220.





GROUND FLOOR



FIRST FLOOR







**'With a couple of statement pieces, you don't need much more.'** SARAH

**FORMAL LIVING** Turn-of-the century architectural details dovetail harmoniously with mid-century modern. Zanotta sofa from Space. Lamp from Abode Bazaar. Rug from Ikea. Artwork by Sokquon Tran.

**Designer buy: Drum coffee table, from \$935, Temperature Design.**

**BATHROOM** Shades of blue create depth and drama. Caesarstone benchtop in Snow. Phoenix tapware from Reece. Tiles from Olde English Tiles Australia. Crane from Bed Bath N' Table.

**FORMAL DINING** "This is my favourite room," says Sarah. "It feels luxurious but not precious." Flynn dining table from Jordan. Chairs from Vampt Vintage Design. Pendant light from Mondo Luce. Custom-made rug from Webber's Carpet Warehouse. Photograph by Rex Dupain.

**Smart buy: Dandelion wallpaper, \$158/10.5m roll, Porter's Paints.**

For Where to Buy, see page 220. >



'Each time I walk into this bedroom, it feels like going to a luxury hotel.' SARAH

### Colour palette



Benjamin Moore Tate Olive  
(kitchen, informal living)



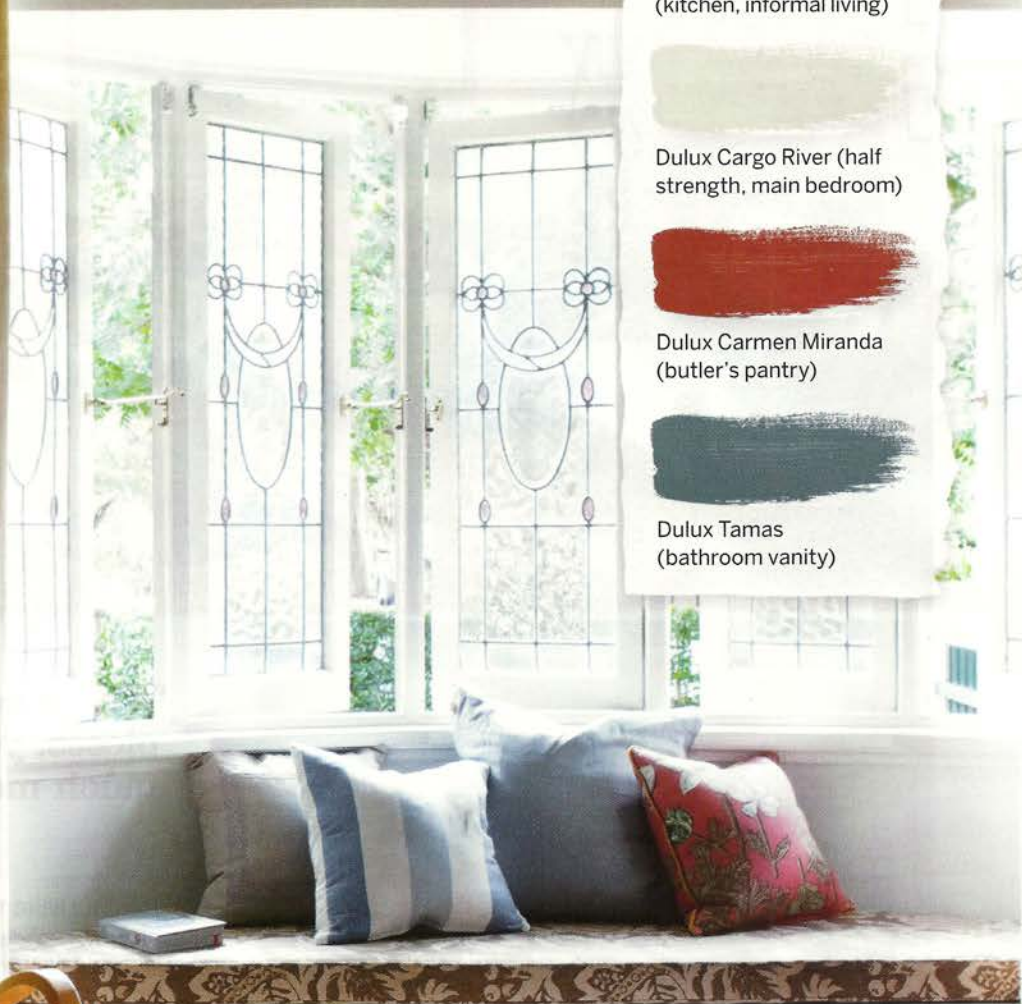
Dulux Cargo River (half strength, main bedroom)



Dulux Carmen Miranda  
(butler's pantry)



Dulux Tamas  
(bathroom vanity)







**MAIN BEDROOM DETAIL** Serene neutrals are punctuated by the bold wake-up hue of the pretty lacquered cabinet. Bedside cabinet from Orson & Blake. Leila bed from Jordan. Lamp from Anthropologie. R. Macek artwork from Dust.

**CHLOE AND EMMA'S ROOM** Nina Campbell Farfalla wallpaper, applied to the wardrobe doors, creates a magical space where the twins sleep and play. Wallpaper from Seneca Textiles. Table from Ikea.

**Smart buy: For similar Vitra Panton children's chairs, try Space.**

**MAIN BEDROOM** Leadlight windows were among the original features that drew Sarah and Craig to this house. An upholstered windowseat adds extra functionality. Joinery by Intercraft Furniture. Orange cushions in Sandberg Greta fabric from Ascraft. Bedcover from Moss River. For Where to Buy, see page 220.

< Three bedrooms lead off the hallway. Beyond lies the formal dining room and living room, connected by double doors. A few steps lead down to an open-plan living space, kitchen and butler's pantry. Upstairs are two more bedrooms (one currently used as a playroom) and a third bathroom.

In the original section, pastel shades create an airy feel, whereas the addition, with its lofty 3.9m ceiling height, has been painted in rich, cocooning hues. "We didn't want the open-plan zone looking like a warehouse with its high ceilings," says Brett. "The green grounds it. The space doesn't feel so large and it connects with the lawn outside."

A handcrafted theme runs throughout the house. Textured wallpapers, rattan pendant light, wool-sisal carpet and natural motifs reference the turn-of-the-century Arts and Crafts movement, but with a modern twist. Architectural details, too, provide visual links. Flat mouldings and sash windows in the new section echo period details in the front, while blackbutt floors in the same hue as the original pine floorboards create a seamless flow.

While this home celebrates the power of contrasts, the combinations themselves exude calm. There's a distinct impression of harmony at play. And, with four children under seven in residence, that's quite a feat.

**H&G**

**Architect: Filmer Architects, Haberfield, NSW; (02) 9798 4222 or [www.filmerarchitects.com.au](http://www.filmerarchitects.com.au). Interiors: BMID, Surry Hills, NSW; (02) 9690 0053 or [bmid.com.au](http://bmid.com.au).**

